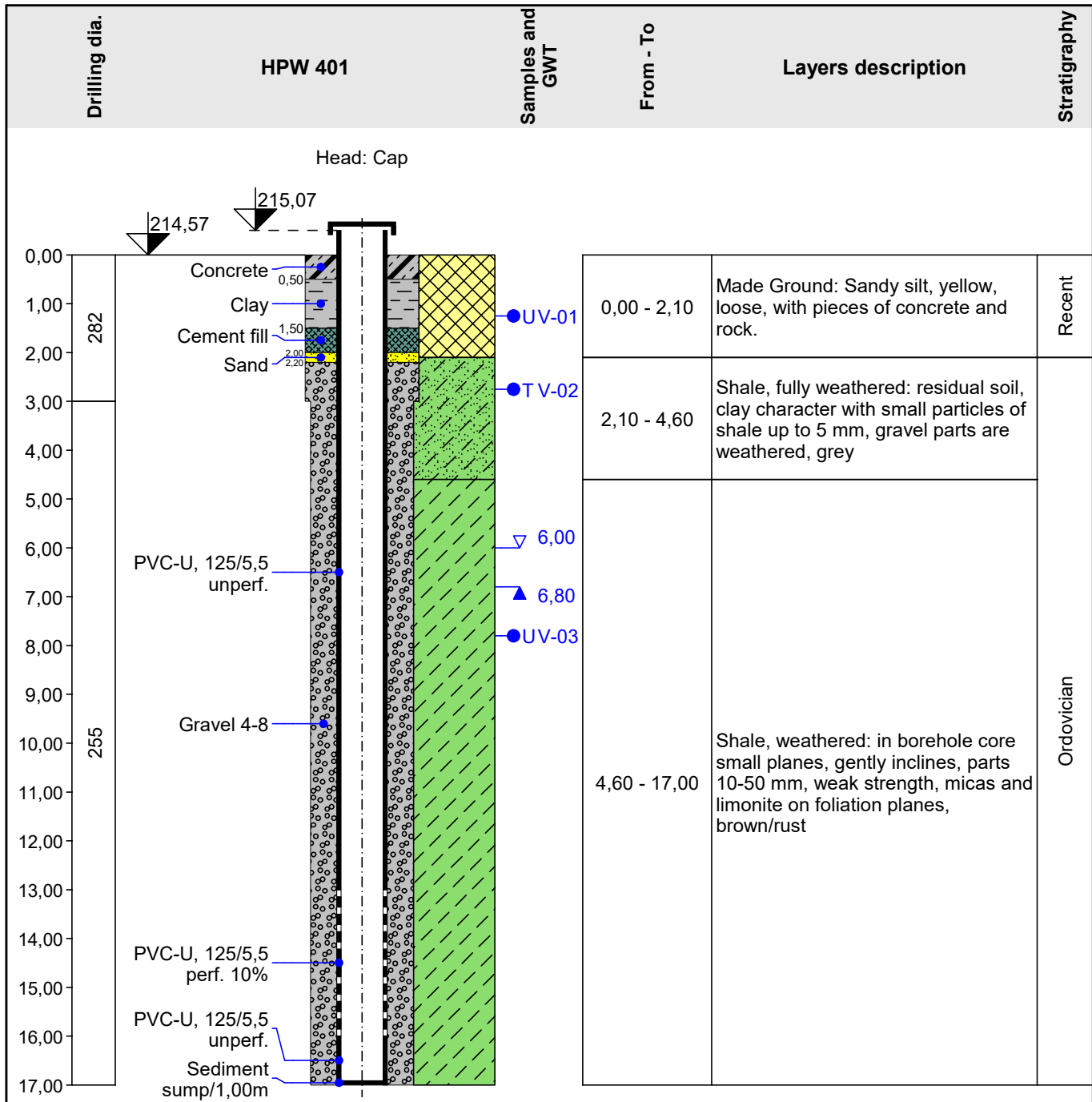


FINE spol. s r.o. Závěrka 12, Praha 6, 169 00		Log of Well		HPW 401
Project: Apartment building "Moonlighting" - Geological survey				
Project ID: AA_0014 - 2019		Annex no.: B/1	Drilling equipment: ROTAMEC	
Location: Prague		Overall depth: 17,00 m		Borehole position:
Date start: 19.02.2018	Foreman: Bill New	Ground water table:		Coordinate X: 1039742,80
Date end: 19.02.2018	Documented: John Young	GWT bored: 6,00 m		Coordinate Y: 745182,14
Scale: one page		GWT steady: 6,80 m		Coordinate Z: 214,57 m



Key:	
GWT bored	full chemical analysis
GWT steady	heavy metals